



# npna

normal park neighborhood association

normalpark.org

Newsletter, Vol. XVI, No. 4, Autumn 2004

## General Meeting Information

**Where:** Senior Citizen Center Rec Park  
**Date:** Wednesday, October 27, 2004  
**Time:** 7:30 – 9:00 p.m.  
**Speakers:** Jennifer Goulet of Community Development and Brett Lenart or Megan Gibb from the Downtown Development Authority  
**Program:** Ypsi is a Cool City

## NPNA GENERAL MEETING

The NPNA General Meeting is at 7:30 pm on Wednesday, October 27, 2004, at the Senior Center in Recreation Park.

Our guest speakers are from the City of Ypsilanti. **Jennifer Goulet** of Community Development will speak about the recent Cool Cities grant from the State. This grant will be officially awarded to the city at a special ceremony on October 21. She will also bring us up to date on recent events with the Riverside Arts Center, the Walkability study done this summer and current Greenways Initiative projects.

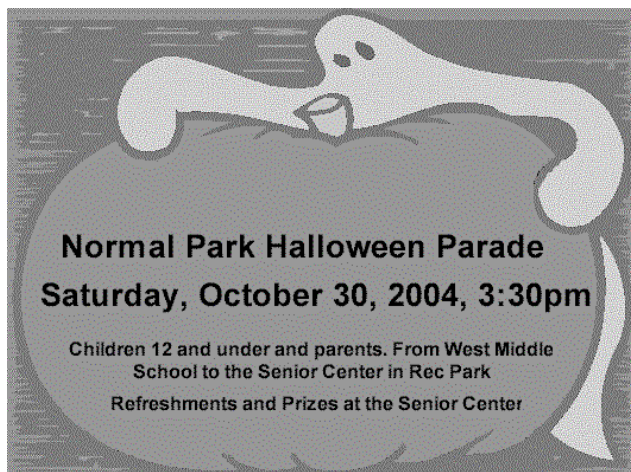
Also on hand will be a representative from the Downtown Development Authority. **Brett Lenart** or **Megan Gibb** will be able to answer any questions regarding downtown, including the current status of the Water Street Project.

We encourage neighbors to attend and ask their questions about our City and its projects.

## HALLOWEEN PARADE

On Saturday, October 30, the NPNA is sponsoring a Halloween Parade. Children 12 and under and their parents are welcome to join the parade and show off their costumes.

We will meet at West Middle school front lawn, go down Grant, turn right on Oakwood then on to the Senior center where we will have refreshments and give out prizes for the best costumes.



## RECREATION PARK COMMUNITY GARDEN CELEBRATES A SUCCESSFUL FIRST SEASON

Corn stalks and tomato plants have become familiar sights in Rec Park now that the Rec Park Community Garden is nearing the end of its first successful growing season. Over 35 residents from Normal Park and Woods Road tended the 17 individual plots, growing a wide variety of vegetables and herbs. The three "Plant a Row for the Hungry" plots, tended by the Ypsilanti Garden Club and many gardeners, yielded over 150 pounds of vegetables that were donated to Food Gatherers.

The garden welcomed about 100 visitors on August 21 when it was a featured site on the Ypsilanti Garden Tour. Many people were surprised to find a true organic community garden in the heart of an Ypsilanti neighborhood. Garden club members gave visitors a tour through the garden and explained its formation and governance. The Rec Park garden was also featured in an Ann Arbor News article on September 11, 2004, for its participation in the Plant a Row for the Hungry program.

What's next for the Rec Park Community Garden? At the end of October, gardeners will take down the garden's remaining plants, trellises and tomato cages for the winter. A winter crop of rye will be planted to nourish the soil over the winter.

Growing Hope, the Ypsilanti-based non-profit community gardening organization that helped launch the Rec Park Community Garden, has received funding to install a school and community garden at West Middle School. With a second community garden site in Normal Park, more residents will be able to take part in community gardening and plot sizes can increase. If you are interested in gardening at West Middle School, please contact Amanda Edmonds at 330.7576. For more information about the Rec Park Community Garden, please contact Jenna Bacolor at 483.1647 or email at [communitygarden@normalpark.org](mailto:communitygarden@normalpark.org).

The garden has become a natural spot for meeting up with neighbors and getting some outdoor activity. Thank you to all the volunteers, gardeners and supporters who helped this neighborhood-based community garden become a success!



## RECREATION COMMISSION UPDATE – OCT 2004

The Recreation Commission was appointed to help address the critical issues surrounding the reduction of recreation programming and funding in the city. The Commission's focus has been on collecting community input from a survey conducted last January and follow-up forums in the spring. The Commission took these ideas and created a set of strategic recommendations that were presented to the Ypsilanti City Council and Mayor in September. The entire set of recommendations will be available on the City of Ypsilanti's web page, [http://www.cityofypsilanti.com/boards/bd\\_recreation](http://www.cityofypsilanti.com/boards/bd_recreation).

Though the Commission presented a number of recommendations to the City, a small number of ideas kept reappearing and became apparent as the most significant and urgent in helping to restore and grow recreation. These recommendations are:

- Clearly define the Assistant City Manager's role in recreation.
- Create a city staff position of Recreation Coordinator whose responsibilities would be to manage grants, partnerships, and contracts, support recreation staff and develop new programming.
- Explore the establishment of a Recreation Authority through partnerships with Ypsilanti and Superior Townships, Washtenaw County, and the Ypsilanti, Lincoln, and Willow Run School Districts.
- Foster and support the proposed Salvation Army partnership to create a Kroc Community Center in the City.
- Establish a regular and ongoing process for communication between the Recreation Commission and the City.
- Implement the City Recreation Master Plan by prioritizing and developing a time line of the improvements.

One main factor has arisen that has sustained some level of recreation programming during the past 15 months of crisis. That factor is the hard work and dedication of a number of citizen's groups connected to the Freighthouse, Parkridge Community Center, Rutherford Pool and the Senior Center. These citizen groups have done tremendous work to keep recreation alive in the City of Ypsilanti. In recognition of the vital role these groups have made, the Commission made another recommendation:

- The City should adopt a Council resolution stating its commitment to supporting "Friends" groups and existing partnerships. Such a resolution should outline the City's intention to maintain basic facility costs (insurance, utilities, basic upkeep).

One citizen's group that has been working particularly diligently this fall is the Ypsilanti Friends of the Freighthouse (FOYF). The indoor activities at the Freighthouse were ceased in September, due to some critical structural issues recently found. After many meetings and a huge citizen outpouring, the City did agree to work with FOYF to formulate a capital improvement plan to address the building's needs. Additionally once such a plan is established and the building can reopen, the City has agreed to execute a short-term

management agreement with FOYF to provide them the opportunity to re-establish and expand the Freighthouse activities.

Another big event that has emerged in the past three months for recreation is the developing partnership between the Salvation Army and the City to apply for funding to build and operate a multi-million dollar recreation center. The funding is available through the national Salvation Army, as part of large endowment created by the Kroc heirs (McDonalds fame). After discussions, presentations and public forums, the City identified Water Works Park as the most suitable site for the proposed center. The local Salvation Army has submitted a pre-proposal to the national group and is awaiting word on whether the City has received approval to begin the planning phase for a recreation center. If approved, a group will be established to make plans for the Center and to submit a full proposal in April 2005.

In the fall the Recreation Commission will have a working meeting with City Council and Mayor. The purpose of the meeting is to review the strategic recommendation and to encourage the City to begin adopting the most urgent recommendations. A date has not yet been set for the meeting.

The Recreation Commission meets the first Thursday of each month at 6:00 PM in City Hall. Public comment is welcome at the beginning of each meeting. If there is other information or comment you would like to provide, please contact the Recreation Commissioners in the third ward: John Weiss - [weissjk@umich.edu](mailto:weissjk@umich.edu) or 480.1823 or Lisa Zuber - [lzuber@ameritech.net](mailto:lzuber@ameritech.net) or 484.0372. Additionally you can Robert Bruner, Assistant City Manager, by phone: 483.1810 or email at [rbruner@cityofypsilanti.com](mailto:rbruner@cityofypsilanti.com).

## FRED THE MAILMAN

Greetings from a Normal Park letter carrier of old.

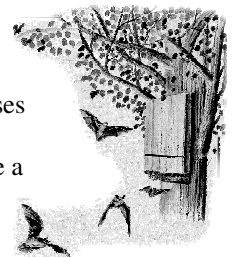
**Fred Altenbernt**, the USPS letter carrier formerly assigned to our area of Ypsilanti, asked to relay his thanks and appreciation to the Normal Park neighborhood. Fred was one of the more social able letter carriers we have had in the past decade. He hummed or whistled as he made his way through our streets and always greeted the kids and dogs, often by name.

He stopped by for a visit recently and reported that he misses our neighborhood, but an ankle injury he suffered within the last two years forced him to take a driving route. He noted that Normal Park is one of the more desirable routes for letter carriers and he felt his years here were more than just a job.

We wish him well and hope our next carrier also enjoys our dynamic community.

## SPONSOR A BAT HOUSE!

Tim Liederbach is working on his Eagle Scout Project. He is putting eight bat houses in Rec Park. He is looking for people to sponsor a house or who are willing to give a donation. Each house costs \$50. If you could help please call 482.0884.



## REC PARK NEWS

### Commemorative Plaque Installed After 9 Year Wait

Visitors to the playground area of Rec Park may have noticed a new plaque on the toddler swing set. It reads: "In memory of Hannah Kathryn Perry, Age 2 ½." After nine long years of patient waiting, **Michael Munn**, a former neighbor who lived on Normal Street, was finally able to see the plaque dedicated this August in honor of his grandchild.

In 1995 Mr. Munn made a very generous donation to the Rec Park Restoration Committee, a group of Normal Park and Woods Road residents and City representatives who began a fund raising campaign to restore Rec Park. The campaign was very successful and resulted in many improvements to the park:

- new playground equipment
- new jogging paths
- brick plaza with commemorative bricks
- park benches
- restoration of the picnic shelter
- opening up the area between the park and Chapelle School
- removal of an unsightly fence along the school property line

To thank Mr. Munn for his generosity, he was promised a plaque in memory of his granddaughter, who loved to visit the park with her grandfather and especially loved the toddler swings. Because of many changes in City personnel the plaque for Hannah was never ordered.

In June, Mary Lema, Special Events Coordinator for the City of Ypsilanti, made it her mission to ensure that the plaque was installed this summer. True to her word, Ms. Lema had the job completed in time for the NPNA Ice Cream Social on August 4, when it was officially dedicated and Mr. Munn was given a long overdue thanks and recognition.

Michael Munn was one of many neighbors who contributed money, time and physical effort to transform Rec Park from its somewhat shabby appearance to the beautiful park it is today. Nine years ago, residents avoided the park and kept their children away because it was viewed as unsafe. Today adults and children enjoy walking, picnicking and playing in the park.

### PARTY STORE ON CONGRESS

As many of you have noticed, the party store on Congress Street has been reopened under new management. The new proprietors are George Goddard and Nufid Omar. They have renamed the store to the "Little Red Store" and are committed to being a community shop.

They have repainted the exterior and have opened up the inside. They carry stamps, batteries, film as well as bread, cookies, milk and other things either craved or forgotten at the grocery. They also have individual candy for kids and newspapers and hot coffee for the adults.

Their hours are 10 am to 8 pm but will change to 11 pm once they receive their beer and wine license. Nufid was very clear that they did not want a liquor license, only beer and wine. They have plans for an ATM in the future.

Stop by and say hello!

## NPNA ANNUAL ICE CREAM SOCIAL

The Ice Cream Social held on Wednesday, August 4, was a great success.

Despite many small hurdles prior to the event, they were overcome and the event came together beautifully. The skies cleared after 24 hours of rain, lots of folks turned out, and the kids had a wonderful time getting tattoos, drawing with chalk, blowing bubbles and much more.

Many thanks go to **Christine Obeid** who organized the event and to **Stacey Fallis** for providing lots of kids' activities. Without the dedication of these two fine women the event truly would not have been possible. Thank you to neighbors who provided coolers to keep the ice cream cold.

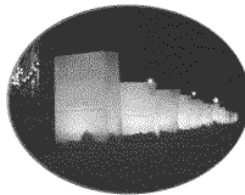
The Ice Cream Social had a little formality inserted into it this year, with the NPNA officers taking time to thank a few people for their outstanding commitment to our neighborhood.

Thank you to **Michael Munn** who over nine years ago contributed to the Rec Park improvements and this summer finally saw the installation of a special plaque dedicated to his granddaughter installed on the tot swings. Thank you to **Carol** and **Rick Leyshock** for their work on the park restoration and for their continued dedication to the Rose Garden. Thank you to **Dianne Willis** for her ongoing work in the Rose Garden, especially for the lovely semi-circle of lavender. Thank you to **Sarah Weiss** and **Jenna Bacolor** for their tremendous leadership and hard work in the creation of the Rec Park Community Garden.

Overall we would like to thank everyone from the neighborhood who turned out to have fun. It was great to see old friends and make new ones. We are already looking forward to next year.

## NIGHT OF LIGHTS

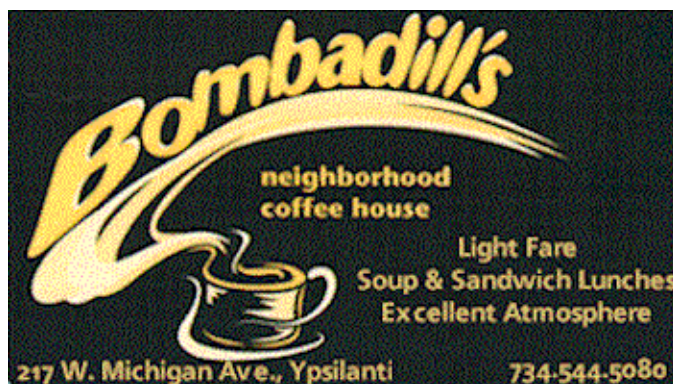
On Saturday, December 4 at 6:00 pm, welcome winter with an evening of strolling by luminaries, sipping warm cider, and spending some time with your neighbors.



The NPNA will be selling luminaries as a fundraiser. If you are interested in helping please contact Heather Benoit at 481.0726 or email her

[habenoit@med.umich.edu](mailto:habenoit@med.umich.edu).

More information will be sent out soon and will be available on the Normal Park website: [www.normalpark.org](http://www.normalpark.org).





## HOMES FOR SALE/HOMES RECENTLY SOLD

As of this printing, the following homes are for sale in our neighborhood:

1501 W Cross	\$174,900
1129 S Congress	\$184,900
1115 Grant	\$184,900
1304 Pearl	\$189,900
475 Owendale	\$189,900
917 Grant	\$207,900
907 Pearl	\$209,900
308 Wallace	\$219,900
1219 Grant	\$224,900
1129 N Congress	\$229,900
916 Grant	\$234,900
948 Sheridan	\$249,000
1209 Westmoorland	\$249,900
472 N Mansfield	\$249,900
1205 Westmoreland	\$279,000

The following homes have sold recently:

1215 S. Congress	\$113,500
1219 Elbridge	\$159,900
6 Elm	\$167,000
1123 S Congress	\$169,000
1212 Pearl	\$181,500
1204 Westmoorland	\$189,000
909 Sheridan	\$190,000
1308 Pearl	\$192,000
211 Elm	\$197,000
1 Oakwood	\$205,000
1103 Grant	\$208,000
1131 S Congress	\$223,000
915 Woods	\$247,900
122 Linden Ct	\$250,000

**Sue Collins**, an NPNA resident and agent at Real Estate One provided the above information. Contact her at 483-6609 or 662-8600.



## 2004 BOARD

### MEMBERS/CHAIRPERSONS

President:	Lisa Wozniak	483-5013
Vice-President/ New Neighbor	Heather Benoit	481-0726
Treasurer:	Rebecca Dunkle	482-9330
Secretary/ Newsletter/Website	Joe Capuano	483-6091
Recreation Park:	Carol Leyshock	481-0836
Greenscape Chair:	Sarah Weiss	480-1823
At-large members:	Jenna Bacolor	483-1647
	Sue Collins	483-6609
	Patrick McLean	485-5852
	Kirsten Mowrey	483-6811
	Bea Otis	482-8567

If you have questions about our neighborhood, items you would like discussed at the next board meeting or information on opportunities to volunteer please contact a board member.

## NPNA AND YPSILANTI HAPPENINGS

For more and up to date information see [www.normalpark.org](http://www.normalpark.org)

- **NPNA General Meeting** Oct 27  
Senior Center, Rec Park, 7:30 - 9:00 pm
- **Downtown Halloween Fall Festival** Oct 29  
Downtown Ypsilanti
- **Normal Park Halloween Parade** Oct 30  
Normal Park Neighborhood, 3:30 pm
- **NPNA Board Meeting** Nov 10
- **NPNA Night of Lights** Dec 4  
Normal Park Neighborhood, 6:00 pm
- **Holiday Home Tour** Dec 5  
Riverside Park
- **New Year Jubilee** Dec 31

## NPNA DUES

In addition to the annual yard sale, dues are one of the NPNA's main sources of funding. They are not required but they do help our neighborhood pay for projects like Recreation Park improvements. Dues are \$10.00 per household and anyone who contributes \$40.00 or more will receive a NPNA coffee mug. Payment of cash or check made to NPNA can be given to any of the board members.

## NEIGHBORHOOD EMAIL GROUP

Have you signed up for our neighborhood email group? Keep up to date on neighborhood news and announcements. It's a nice supplement to the quarterly newsletter. To sign up send your email address to [listserv@normalpark.org](mailto:listserv@normalpark.org) or visit [normalpark.org](http://normalpark.org).

If you have news items of your own that you would like to send to the neighborhood, email [npna@umich.edu](mailto:npna@umich.edu).

## NORMAL PARK NEIGHBORHOOD WEB SITE

Keep up to date on the latest information and events happening in our neighborhood and city. There is also an extensive list of links to city, community and business websites.

It can be found at [www.normalpark.org](http://www.normalpark.org).

## ADVERTISE IN THE NEWSLETTER

The NPNA newsletter reaches over 700 households in Ypsilanti. A business card sized ad is only \$30.00 per issue. If you are interested in advertising in the newsletter please contact a board member or visit [www.normalpark.org](http://www.normalpark.org).

## SPECIAL THANKS

Special thanks go to Kristi Martin for the printing of this newsletter. Thank you!

**Custom Cabinetry & Home Remodeling**

**Mike Smith**  
**734.915.5741**

**Big and Small Projects at a Fair Price**

Normal Park references available  
Check Angela's Porch at 1010 Pearl St

NORMAL PARK AUTUMN WORD SEARCH	
<p>APPLES</p> <p>BRRRR</p> <p>CIDER</p> <p>COSTUMES</p> <p>GHOSTS</p> <p>HALLOWEEN</p> <p>HARVEST</p> <p>LEAVES</p> <p>LUMINARIA</p>	<p>NOVEMBER</p> <p>OCTOBER</p> <p>PARADE</p> <p>PUMPKINS</p> <p>RAKES</p> <p>SCHOOL</p> <p>SWEATERS</p> <p>TREATS</p> <p>TRICKS</p>

H M D C H M B S O F F R S O T C B M M S  
A I G H R F R Z E M D A E A C V Z H U E  
R X A A V E P Q T A B L M B P T D Y O V  
V K K W T C B F X R K W U L M P O M N A  
E E Y A P U M P K I N S T B O E L B T E  
S K E D Z T C D W V D M S R W O V E E L  
T W T V I T B A P T A O O R Y V H O S R  
S T A E R T M J A H H Q C R Q S Q C N D  
O V Z E I B A J L Y U S V R T B M U S B  
A I R A N I M U L T T H B A B B Y A F J  
U F R D L W D K R S A P Q L G G J G T D  
S N M Q H T C I O L W Q X G X G C T M T  
B V U M I Z C H L M D G S D A R S Q A F  
I F L W A K G O J L N K J G Z K O M E M  
L L Q N S R W B B M I X M Q O H K B J Z  
B B T X J E G Z B U Q D X M Y B V X J H  
Z G I C E R U B Z L K U Z D M D P T O K  
Q J S N J N J Y R E D I C G R B T M I F  
B I P D K I S S G E L C Q R A E D H C Q  
Y M Y P A R A D E F H R A A Y K T K L L



WHICH TWO JACK-O-LANTERNS ARE THE SAME?

 **Hexabits™**  
imagine • create • connect

**Lisa Zuber**  
*Your Local Source for Hexabits*  
Individual • Commercial • Educational 

1005 Pearl St, Ypsilanti MI 48197  
734-484-0372 (home)      lzuber@ameritech.net

**CHAD PRATT PAINT**



**Interior/Exterior 734.260.7694**

